

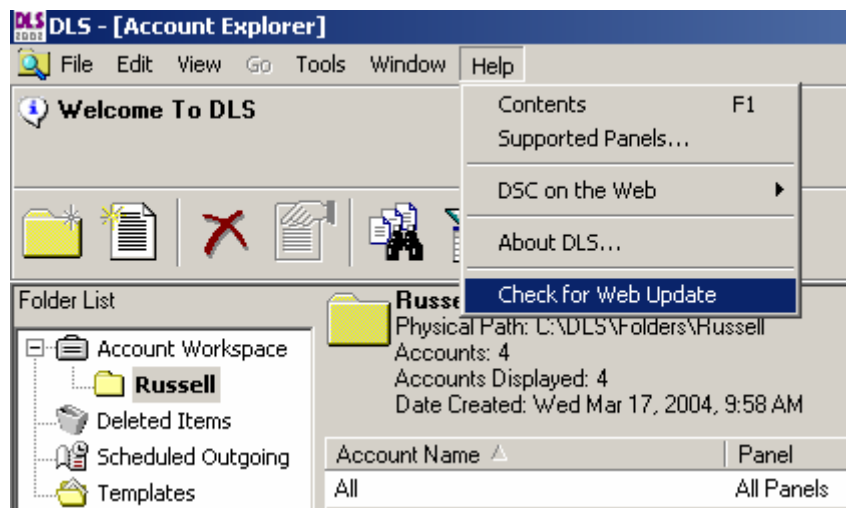
DLS2002 Web Update Tool User Instructions

Step 1 Download and run the DLS2002 Web Update driver pack (DLS2002 Web Update Add-In.exe). This will install the Web Update utility.

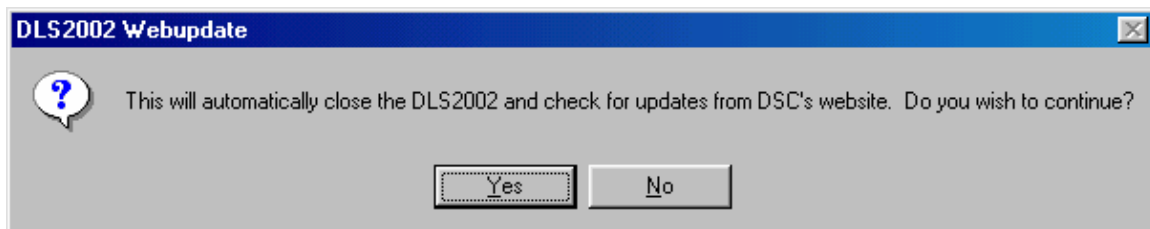
Step 2 Run and logon to DLS2002.

Step 3 On the DLS2002 toolbar click 'Help' and then click 'Check for Web Update'.

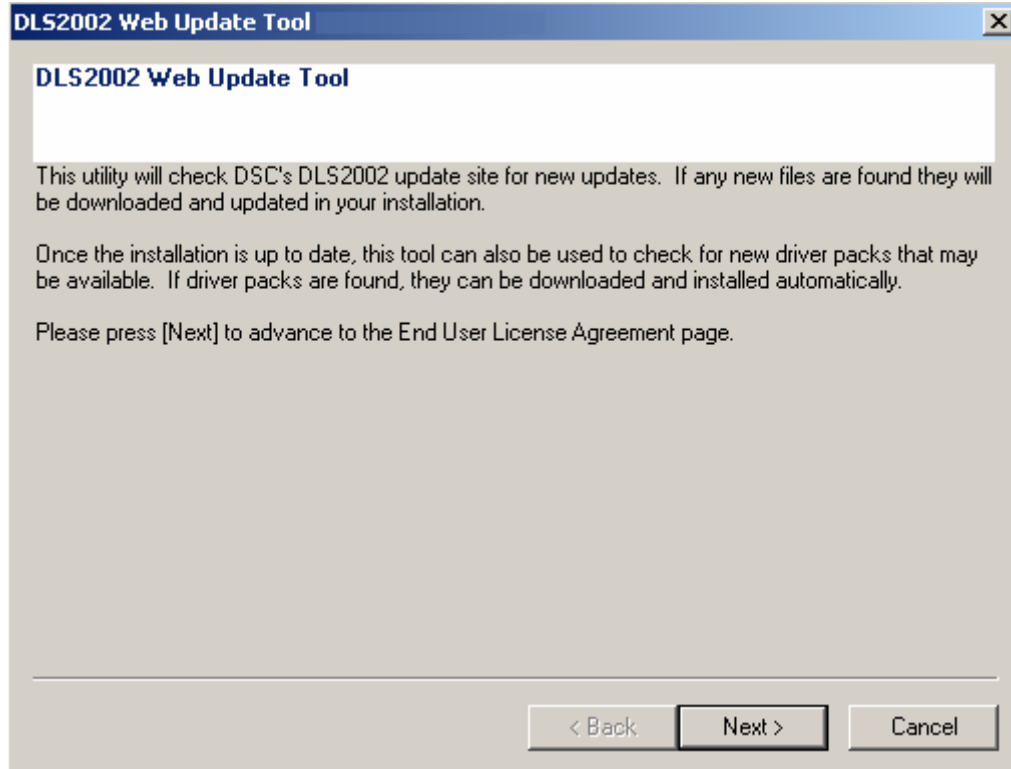
NOTE: If you are using a modem and get a message saying 'Unable to check for updates' you will need to connect to the internet and retry.



Step 4 Acknowledge the dialog box by clicking 'Yes' to close DLS2002 and run the web update utility.



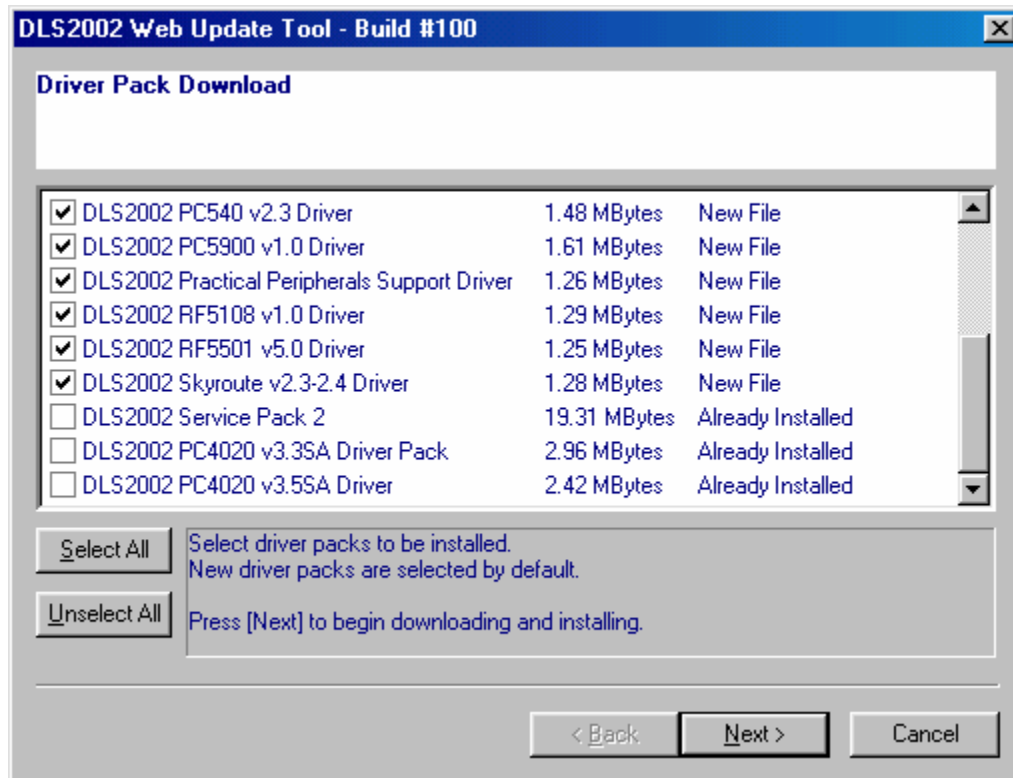
Step 5 Click 'Next' to advance to the End User License Agreement.



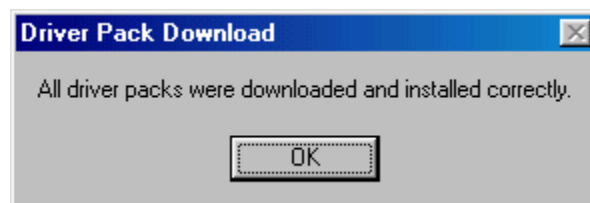
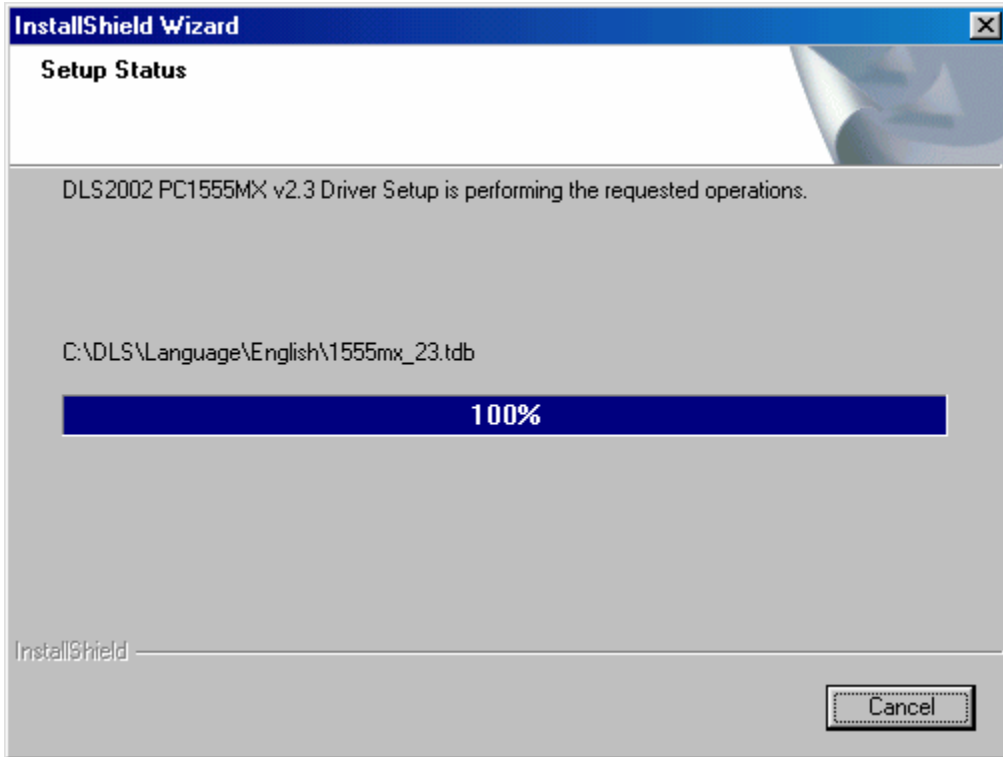
Step 6 Read and accept the terms of the license agreement and click 'Next'.

Step 7 Select the drivers to be installed and click 'Next'.

NOTE: Only new files not currently installed will be checked by default on this screen. Any drivers already installed will not be checked and will indicate 'Already Installed'.



Step 8 The utility will automatically download and install the selected drivers to the DLS2002 installation. Click 'OK' to acknowledge completion of the driver(s) download and installation.



Step 9 Click 'Finish' to restart DLS2002 and logon or click 'Cancel' to exit the Update Wizard and return to Windows.

